



EoL

END OF  
LINE

## AG360 AUTOMATICALLY GUIDED ROBOTIC STRETCH WRAPPER



### Battery power provides maximum portability & flexibility

The Orion AG360 is the stretch wrapping solution for maximum flexibility in your pallet unitizing operation. The battery operated AG360 is fully portable and can be easily driven to wherever it's needed to stretch wrap your pallets. You can also bring the load to the robot location if desired.

Because the AG360 uses a spring-loaded "follow" wheel, there is no limit to the size (or weight) of pallet loads to be wrapped.

Specially designed high capacity batteries along with Orion's exclusive PowerSave™ alert feature assures that you'll always have enough battery power to drive the unit to the charging station. A battery level meter is also displayed on the control panel.

### FEATURES AND BENEFITS

- Wrap approx. 30 loads per hour or 300 loads per charge\*
- Automatic film cut off at cycle end
- Deluxe color touch screen HMI
- Program up to 10 wrap recipes
- Adjustable film prestretch: 200% or 250%
- Automatic load height sensing photoeye
- Adjustable film tension (force to load)

\*Wrapping capacity is variable depending on load size, top wrap count, bottom wrap count, carriage speed, film tension, and environmental conditions.



# AG360 AUTOMATICALLY GUIDED ROBOTIC STRETCH WRAPPER

## TYPICAL PRODUCT SPECIFICATIONS

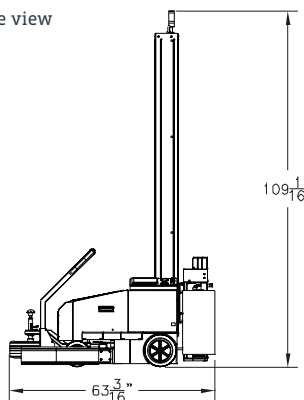
<b>Max. Load Size</b>	Unlimited
<b>Min. Load Size</b>	24" W x 24" L
<b>Max. Load Weight</b>	Unlimited
<b>Min. Load Weight</b>	Approx. 100 lbs. depending on load type
<b>Max. Load Height</b>	95"
<b>Min. Load Height</b>	Approx. 24"
<b>Rotation Speed</b>	Adjustable up to 295' per minute

<b>Film Tension</b>	Adjustable on HMI
<b>Powered Prestretch Rate</b>	Adjustable on Carriage 200% or 250%
<b>Control Voltage</b>	24V
<b>Battery Life</b>	Approx. 30 Loads per hour or 300 Loads per charge*
<b>Stretch Film</b>	20" roll size up to 110 gauge
<b>Warranty</b>	1 Year on all components unlimited cycles

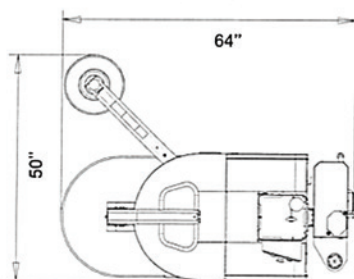
\* Wrapping capacity is variable depending on load size, top wrap count, bottom wrap count, carriage speed, film tension, and environmental conditions.

## CONFIGURATION

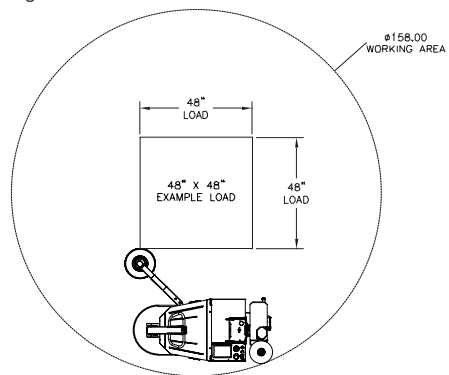
Side view



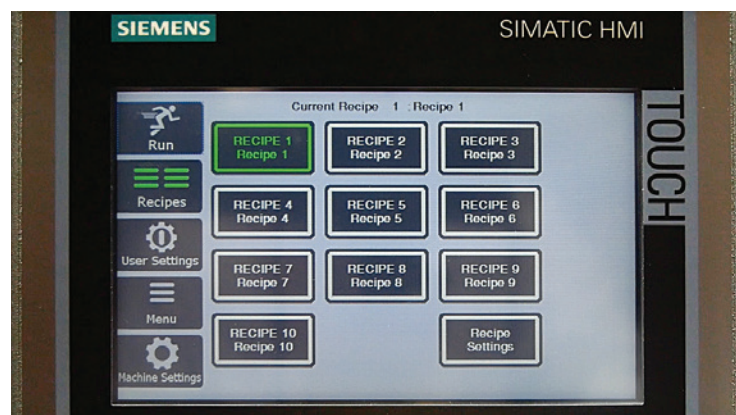
Top view



Working area



## PRODUCT OPERATION



Above photo shows screen for choosing one of the 10 Wrap Recipes available. Password protection prevents operators from making unauthorized changes to wrap settings. The AG360 features a menu-driven operating system displayed on an industrial quality HD color touch screen.

©2018 ProMach Inc. ProMach reserves the right to change or discontinue specifications and designs shown in this brochure without notice or recourse PM-OR-SP100\_Orion\_AG360. Last revised 06/20/18.

PHONE  
(320) 852-7705

FAX  
(901) 365-1071

EMAIL  
Orion@ProMachBuilt.com

WEB  
OrionPackaging.com

4750 County Rd. 13 NE  
Alexandria, MN 56308